

PP15T

INDUSTRIAL PANEL PC

LYNCA[®] PP15T is an Industrial Panel PC developed to work in industrial area demanding robust and powerful PC solutions.



Standard hardware configuration includes :

- Industrial grade 15" LED TFT color screen,
- Resistive touch screen with protection,
- 1.6 GHz or higher Intel Atom[®] processor,
- A fully Industrial grade fanless motherboard,
- 1 GB RAM (up to 2GHz),
- 2.5" HDD, (SSD or Compact Flash optional),
- 1 x PCI expansion,
- 1 x Mini-PCIe expansion,
- 1 x USB 2.0 port on front panel,
- DC12V or AC220V industrial grade power supply,
- Programmable Watchdog Timer (1-255 sec/min),
- Low Power Consumption (40W full load),
- 12VDC or 110/220VAC industrial power supply,
- 0°..50°C operating temperature range,

and the following interfaces :

- 2 x RS-232 ports (+ 3 optional)
- 1 x RS-485/422/232 port,
- 2 x Ethernet port (1GbE),
- 4 x USB 2.0 ports,
- 1 x PS/2 port,
- 12 Volt power output (1A max.)
- 8 x General purpose I/O (5V)



On request **LYNCA[®] PP15T** may be equipped with various motherboard and processors. Special case and membrane executions are possible since 25 units order.

LYNCA[®] PP15T is fully designed with industrial components for operating temperature range of : 0 .. +50°C, higher temperature ranges may be considered.

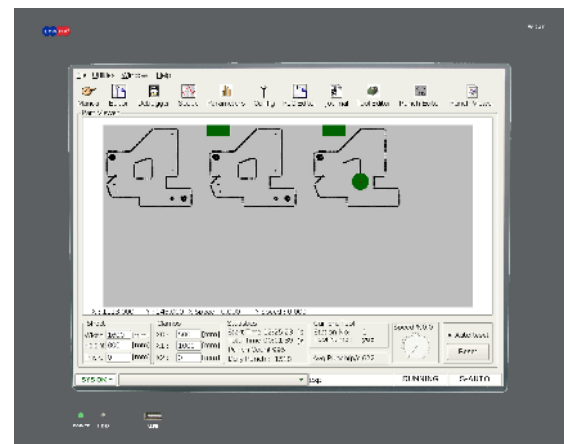
LYNCA[®] PP15T is delivered with standard LINUX OS (Windows[®] OS is an option). It supports also all recent Windows and many other operating systems. On demand, various HW configurations, OS and application software may be preinstalled.

LYNCA[®] PP15T may be delivered with a preinstalled Real-Time Operating System that supports hard real time sampling rates up to 50 microseconds with 20 microseconds of jitter.

For high performance real-time applications **LYNCA[®] PP15T** is an excellent platform.

Typical application areas of **LYNCA[®] PP15T** are :

- SCADA monitoring PC's,
- CNC control units,
- Real-time data acquisition systems,
- Intelligent display panels,
- Presentation PC's,
- Interactive info panels,
- Any other application demanding human interface, real-time processing and displays.



LYNCA[®] PP15T is distributed in Switzerland by SATEL SWITZERLAND TUNCELLI CCS. For more information please contact us or your local supplier.